

Aug. 41. 18  
Soprano

# Ascivenu N° 1

G. Rheinberger

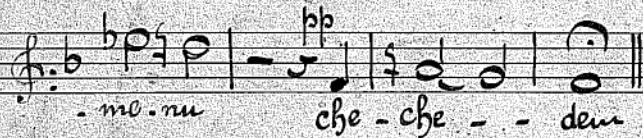
*Sento* *pp*



A-sci-ve-nu a-do--na-i e-le-ha ve-na-



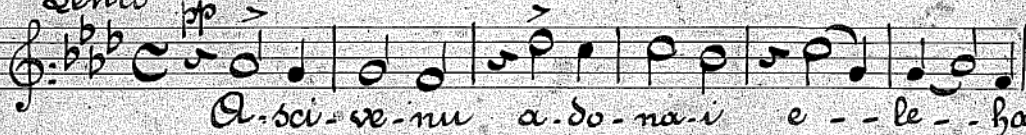
-su-va ha-des ia-me-nu ha-des ia-me-nu ha-des ia-



-me-nu che-che--dem

# Ascivenu N° 2

*Sento*



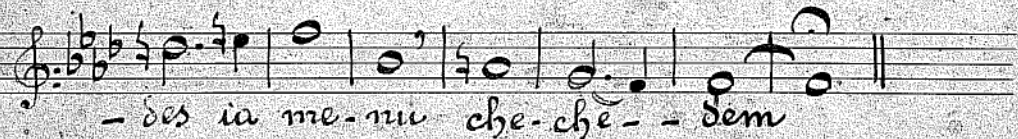
A-sci-ve-nu a-do-na-i e--le--ha



ve-na-suva a-sci-ve-nu a-do-na-i



e-le-ha ve-na-suva ha-



-des ia-me-nu che-che--dem



Imloh N°1

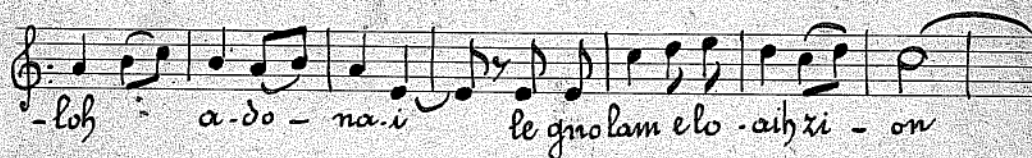
Soprano



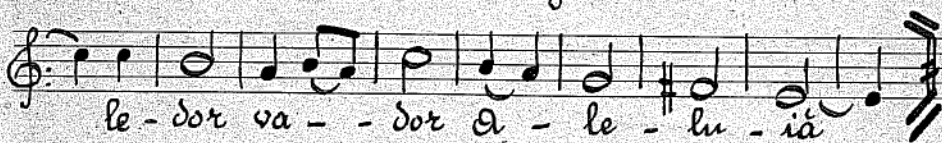
Im-loh a-do-na-i le - - - gno - - lam e-lo -



- a - ih xi - on le - dor va-dor a - le-lu-ia *Fine* *pp*  
Im.



-loh a-do-na-i le gno lam elo - aih xi - on

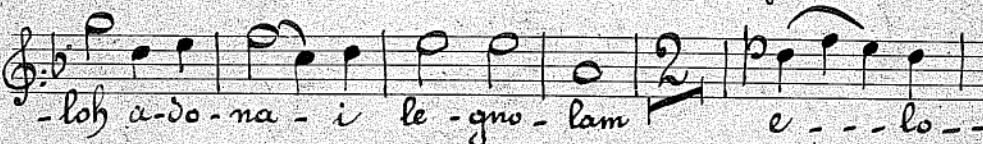


le - dor va - - dor a - le - lu - ia

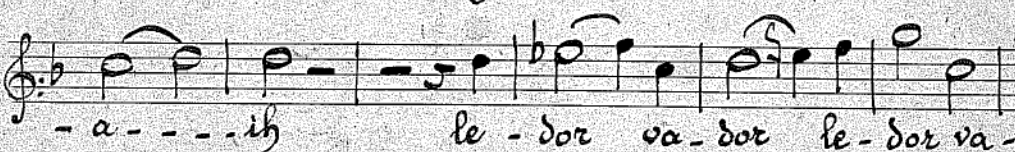
Imloh N°2



*mf*  
Im-loh a-do-na-i le - gno-lam, im-



-loh a-do-na-i le-gno-lam e - - - lo - -



- a - - - ih le - dor va - dor le - dor va -



- dor a-le-lu-ia a - le - lu - ia

4106