

Ufficiatura  
Muziale  
Organista



Salmo 128

MFT 2-3-6-7-9-10

MVS 11-IV

INV 10



Maria di Nozze

*estratta dall'opera*

Sommernachtstraum

di

Felix Mendelssohn-Bartoldy

Ridotta per piccolo Organo dal M<sup>ro</sup> G. Fängerle

MEM 2-3-  
MUS. 11-I  
IMV. 10

*Allegro*

Organo

*ff*

*trium*

*I<sup>o</sup>*

*II<sup>a</sup> volta pausa*

*ff*



*trium*

Handwritten musical score for the first system. It consists of two staves: a treble staff and a bass staff. The treble staff begins with a treble clef and a key signature of one sharp (F#). The music includes various note values, rests, and dynamic markings such as *trium*. A large handwritten number '7' is positioned above the right side of the system. The system concludes with first and second endings, labeled '1<sup>a</sup>' and '2<sup>a</sup>' respectively.

Handwritten musical score for the second system. It consists of two staves: a treble staff and a bass staff. The treble staff begins with a treble clef and a key signature of one sharp (F#). The music includes various note values, rests, and dynamic markings such as *trium*. The system concludes with first and second endings, labeled '1<sup>a</sup>' and '2<sup>a</sup>' respectively.

Handwritten musical score for the third system. It consists of two staves: a treble staff and a bass staff. The treble staff begins with a treble clef and a key signature of one sharp (F#). The music includes various note values, rests, and dynamic markings such as *trium*. The system concludes with first and second endings, labeled '1<sup>a</sup>' and '2<sup>a</sup>' respectively.

Handwritten musical score for the fourth system. It consists of two staves: a treble staff and a bass staff. The treble staff begins with a treble clef and a key signature of one sharp (F#). The music includes various note values, rests, and dynamic markings such as *trium*. The system concludes with first and second endings, labeled '1<sup>a</sup>' and '2<sup>a</sup>' respectively. A circled number '3' is visible in the bass staff of the second ending.

Handwritten musical score, first system. Treble and bass staves. Key signature: one sharp (F#). Dynamics: *ff*. Performance markings: *tr* (trill) and *trm* (trill). The system contains two measures.

Handwritten musical score, second system. Treble and bass staves. Key signature: one sharp (F#). Performance markings: *trm* (trill) and *(ad lib)* (ad libitum). The system contains two measures.

Handwritten musical score, third system. Treble and bass staves. Key signature: one flat (Bb). Performance marking: *Ped.* (pedal). The system contains two measures.

Handwritten musical score, fourth system. Treble and bass staves. Key signature: one flat (Bb). Performance marking: *Ped.* (pedal). The system contains two measures.



Handwritten musical score system 1. The system consists of two staves. The upper staff is in treble clef with a key signature of one flat (B-flat). It features a melodic line with various intervals and accidentals, including a trill-like figure. The lower staff is in bass clef and contains a dense accompaniment of chords and eighth notes. A first ending bracket labeled "1<sup>a</sup>" spans the final two measures of the system.

Handwritten musical score system 2. The system consists of two staves. The upper staff is in treble clef with a key signature of one flat. It contains a melodic line with a fermata over the first measure and a 7-measure rest. The lower staff is in bass clef with a complex accompaniment of chords and eighth notes. A second ending bracket labeled "2<sup>a</sup>" spans the first two measures of the system.

Handwritten musical score system 3. The system consists of two staves. The upper staff is in treble clef with a key signature of one flat. It features a melodic line with a fermata over the final measure. The lower staff is in bass clef with a complex accompaniment of chords and eighth notes. The word "Ped" is written below the lower staff in the third measure.

Handwritten musical score system 4. The system consists of two staves. The upper staff is in treble clef with a key signature of one sharp (F#). It features a melodic line with a fermata over the first measure and a triplet of eighth notes. The lower staff is in bass clef with a complex accompaniment of chords and eighth notes. The word "m.d." is written below the lower staff in the second measure.

Handwritten musical score system 1. It consists of two staves, treble and bass clef. The key signature has one sharp (F#). The music features complex chordal textures in the right hand and a more rhythmic bass line. There are two instances of the word "trium" written above the right-hand staff.

Handwritten musical score system 2. It consists of two staves, treble and bass clef. The music continues with dense chordal accompaniment in the right hand and a steady bass line. The word "trium" is written above the right-hand staff.

Handwritten musical score system 3. It consists of two staves, treble and bass clef. The right hand has a melodic line with some grace notes. The left hand has a bass line with some triplets. The word "trium" is written above the right-hand staff, and "ff" is written below the left-hand staff.

Handwritten musical score system 4. It consists of two staves, treble and bass clef. The right hand has a melodic line with some grace notes. The left hand has a bass line with some triplets. The word "trium" is written above the right-hand staff.



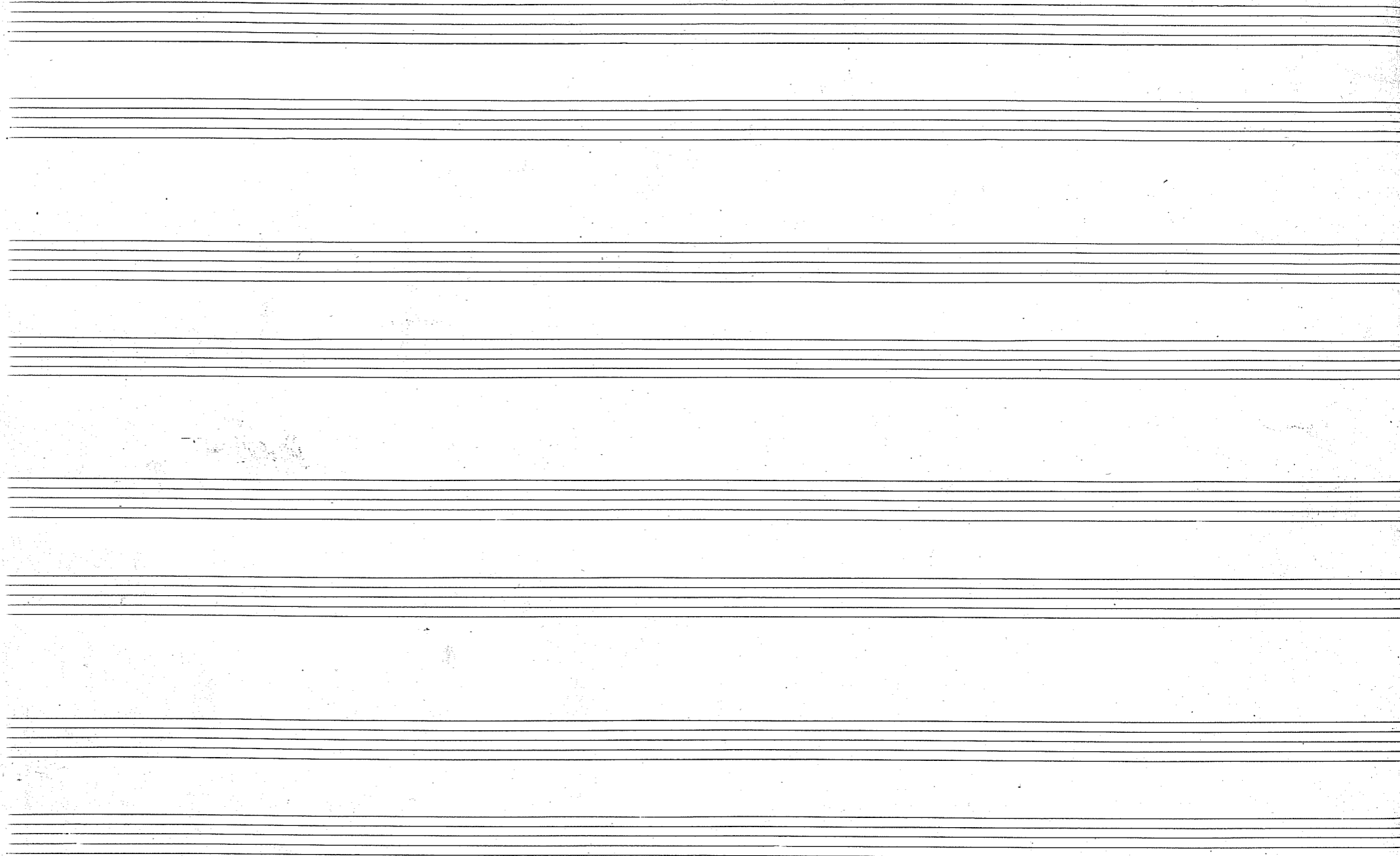
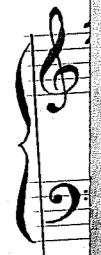
Handwritten musical notation for the first system. The treble clef staff contains a melodic line with several triplet markings (indicated by a '3' above the notes). The bass clef staff contains a bass line with chords and a trill (tr) above the first measure. The system concludes with a double bar line.

Handwritten musical notation for the second system. The treble clef staff continues the melodic line with more complex rhythmic patterns. The bass clef staff features a trill (tr) above the first measure and a long, sustained note in the second measure. The system concludes with a double bar line.

Handwritten musical notation for the third system. The treble clef staff shows a melodic line with a trill (tr) above the first measure. The bass clef staff continues with a bass line. The system concludes with a double bar line.

Handwritten musical notation for the fourth system. The treble clef staff features a melodic line with a trill (tr) above the first measure. The bass clef staff contains a bass line with some notes written vertically. The system concludes with a double bar line.

*G. Wangerle*  
*violin solo*  
*8/11/1909*







# Berich abä Blumenthal

*Vocals*

*Organo*

~~Organo~~  
*Organo*

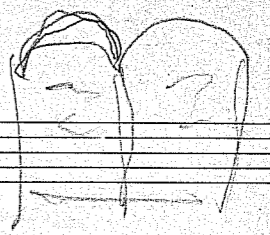
*Voci*

*berich abä Blumenthal*

-ruh a - ba be - sem ado - nai be - rah - ne hem mi -



*Soprano*  
~~Soprano~~



*U e combalte*

Voci

bed ado-nai ba-ruh a-ba be-tem ado-nai be-rah nu-heru mi-

Organo

Voci

bed ado-nai e-li a-ta ves-de-ka e-loai a-ro-ma-

Organo



Voci  
me - ka e - li a - ta ves - de - ka e - lo - ai a - roma - meka

Organo  
rit.

Voci  
baruh a - ba  
ba ruh a ba  
o - du

Organo  
p. rit.  
p.  
rit. vivo pp.

Voci  
la do do na - i chi - tor chi - le - gno - lam has

Organo

Voci  
a - me - ka

p.  
o - du

Voci  
do ba - ruh a - ba be - tem a - do - na - i be - rah - nu -

Organo

Voci  
hem mi - bed a - do - na - i mi - bed a - do - nai mi -

Organo

Voci  
bed a - do - nai a - do -

Organo

rit.

dan i fa



Sis amana lot

Salmo « Asse col iere

Preludio

Organo

Voce sola

Organo

rit.

Solo Soprano

as — re col ier

Sis amana lot

Organo

re a-do-na-i a-o-leh a-o-leh

bid-ra-hau



ie ghiagn ca - pe ha chi do - hel as - re - ha as - re - ha ve

Organo

tor lah

Coro

es - te - ha che ghe - fen po - ri

Organo

gia be - iat - che - de be - de ha ba

Organo

Coro

mecu - de - sed mecu - de - sed

Disposte al Rabbino

ne-ha chit-di-le re-dim sa-viv sa-viv le sul ha-me

Organ

ha i-ne hi-ken ie-vo-tah ga-ver i-ete ie-

Solo

Organ

re a-do-nai

ie-varehe-ha

Tutti

Organ