

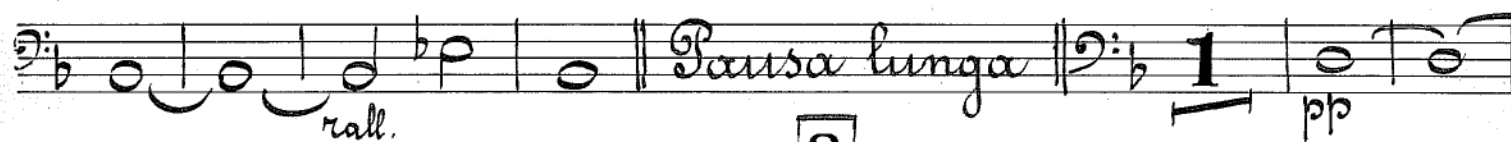
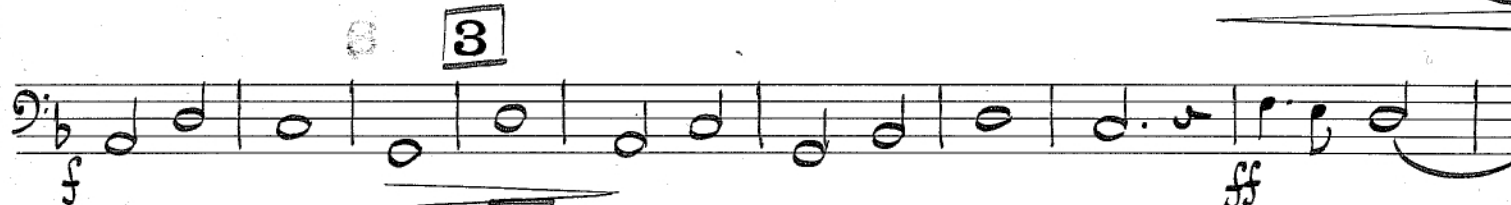
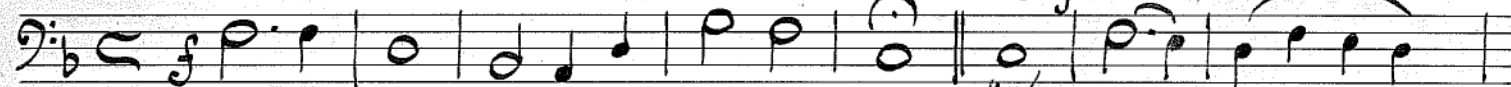
# Ufficiatura di Pasqua

# Violoncello

## 1 O. Ravanello Salmo 105

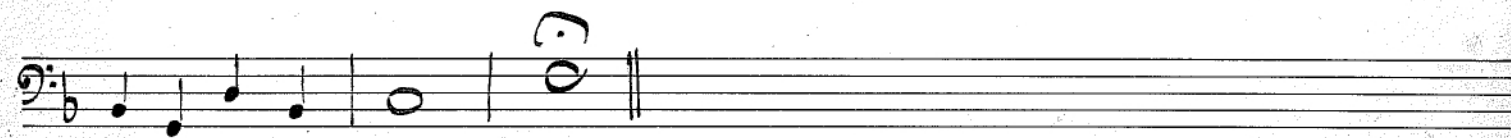
*Maestoso*

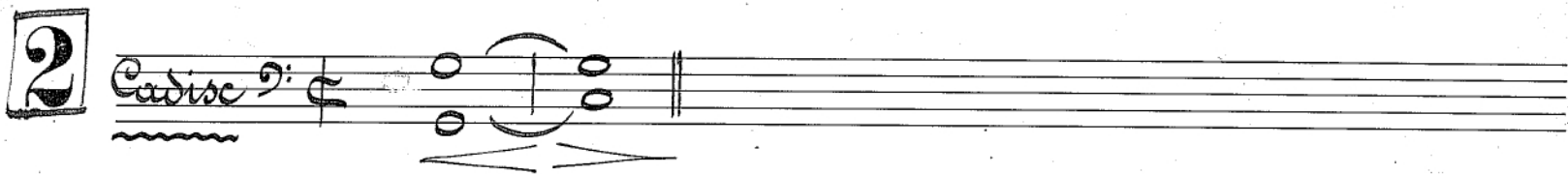
*Poco più*



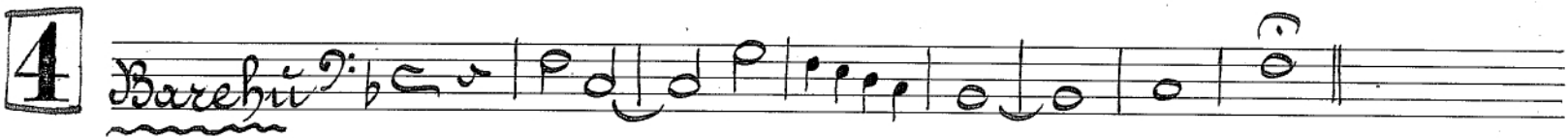
*rall.*

*Mosso*

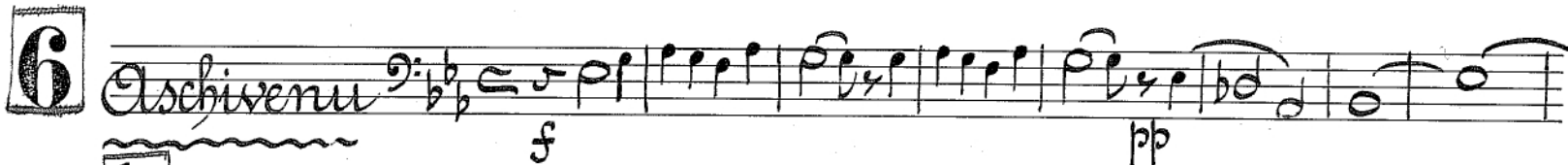


**2** Cadise 

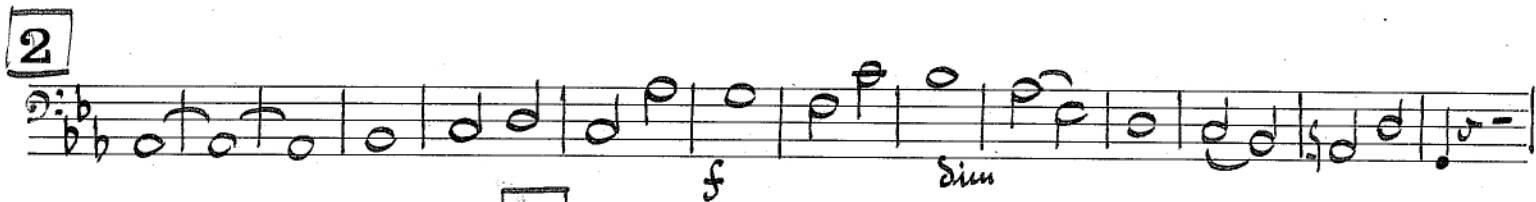
**3** 

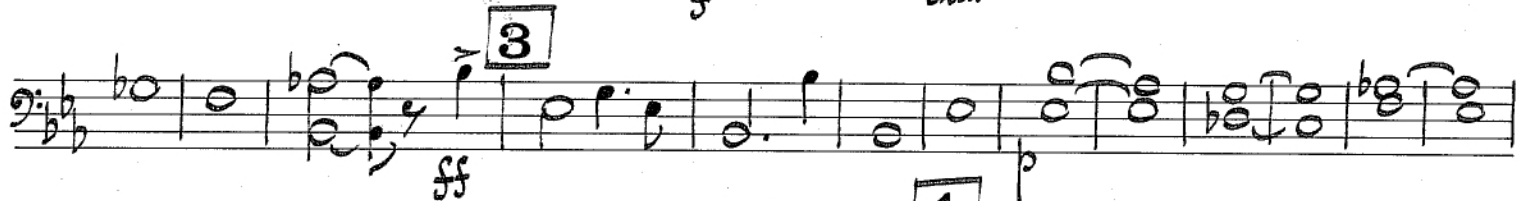
**4** Barehi 

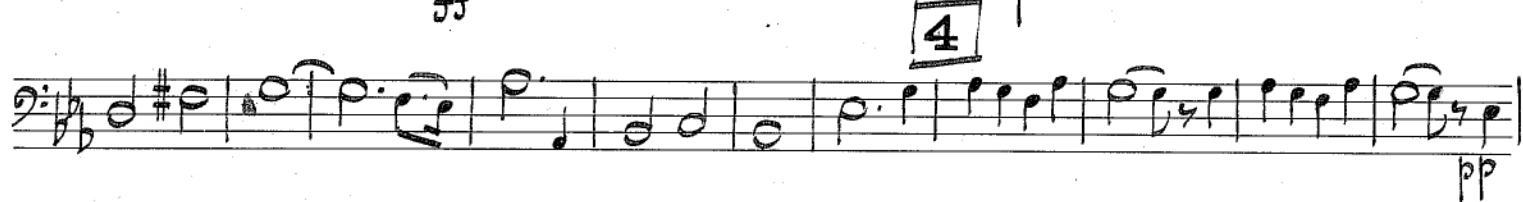
**5** Scemagn 

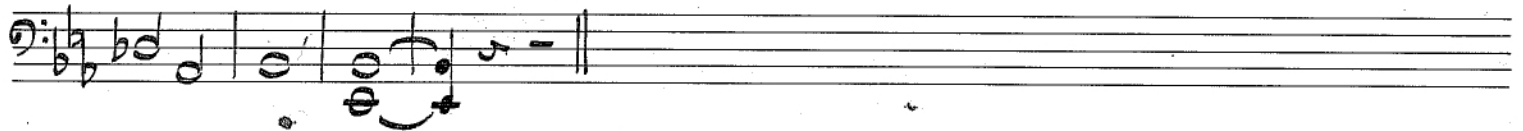
**6** Aschivenu 

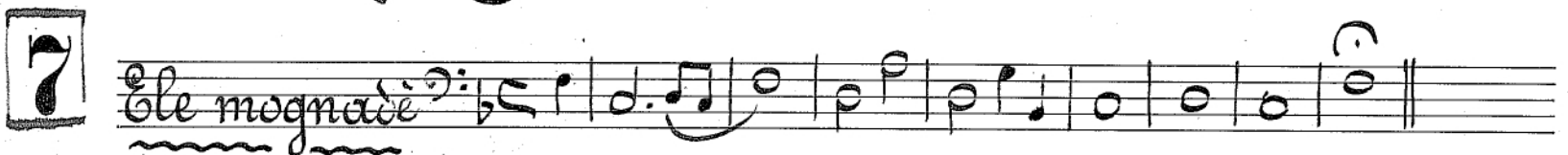
**1** 

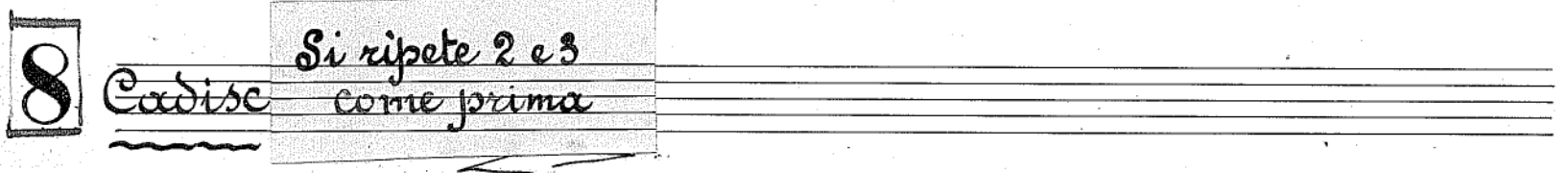
**2** 

**3** 

**4** 



**7** Ele mogna di 

**8** Cadise 

Si ripete 2 e 3  
come prima

9

# Berréd Israél

Musical score for 'Berréd Israél' in bass clef, 2/4 time, key of B-flat major. The score consists of six staves. The first staff begins with a forte (f) dynamic and a piano (p) dynamic. The second staff includes a fortissimo (ff) dynamic. The third staff has a mezzo-forte (mf) dynamic. The fourth staff ends with a first ending bracket. The fifth staff is marked 'rall...'. The sixth staff concludes with a double bar line.

10

Musical score for 'Tgdal' in bass clef, 2/4 time, key of B-flat major. The score consists of two staves. The first staff is marked mezzo-forte (mf). The second staff concludes with a double bar line.

11

Musical score for 'Medim' in bass clef, 2/4 time, key of B-flat major. The score consists of two staves. The first staff is marked mezzo-forte (mf). The second staff concludes with a double bar line.

12

Musical score for 'Gnomer' in bass clef, 2/4 time, key of B-flat major. The tempo is marked 'Adagio'. The score consists of two staves. The first staff includes a 'Pausa' (pause) instruction. The second staff concludes with a double bar line.

470

