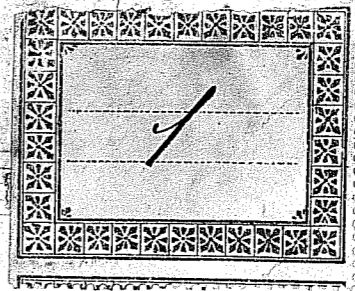


*[Handwritten mark]*



*[Handwritten flourish]*

*Comemù 2<sup>o</sup>*

*Del Maestro*

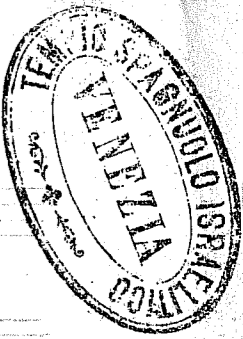
*Marzucato*

Ms. H. XII



Te  
Te  
Te

~ *Romemü.* ~



Intonazione *f* Basso  $\text{D}^{\flat}$   $\text{C}$

Ga - de - li la - do - na - i i - ti un - ro - me mü fe - mö jah - - docu -

Devoto *p.*

Soprani  $\text{D}^{\flat}$   $\frac{2}{4}$  *coi Ten. II*

Ten. I  $\text{D}^{\flat}$   $\frac{2}{4}$

Ten. II  $\text{D}^{\flat}$   $\frac{2}{4}$

Bassi  $\text{D}^{\flat}$   $\frac{2}{4}$

Ro - me - mü a - do - nai e - lo - e - mu veif - ta - ha - vu laa -

- dom rag - - la - u ca - dos - ü Ro - me - mü a - do - nai e - lo -

Handwritten musical score for the first system, consisting of three staves. The notation includes notes, rests, and bar lines. Above the staves are several sharp symbols (#) indicating key signatures. The lyrics are written below the staves: "e - me veif - ta - ha - vi le - ar - cod - so' chi ca - dos -".

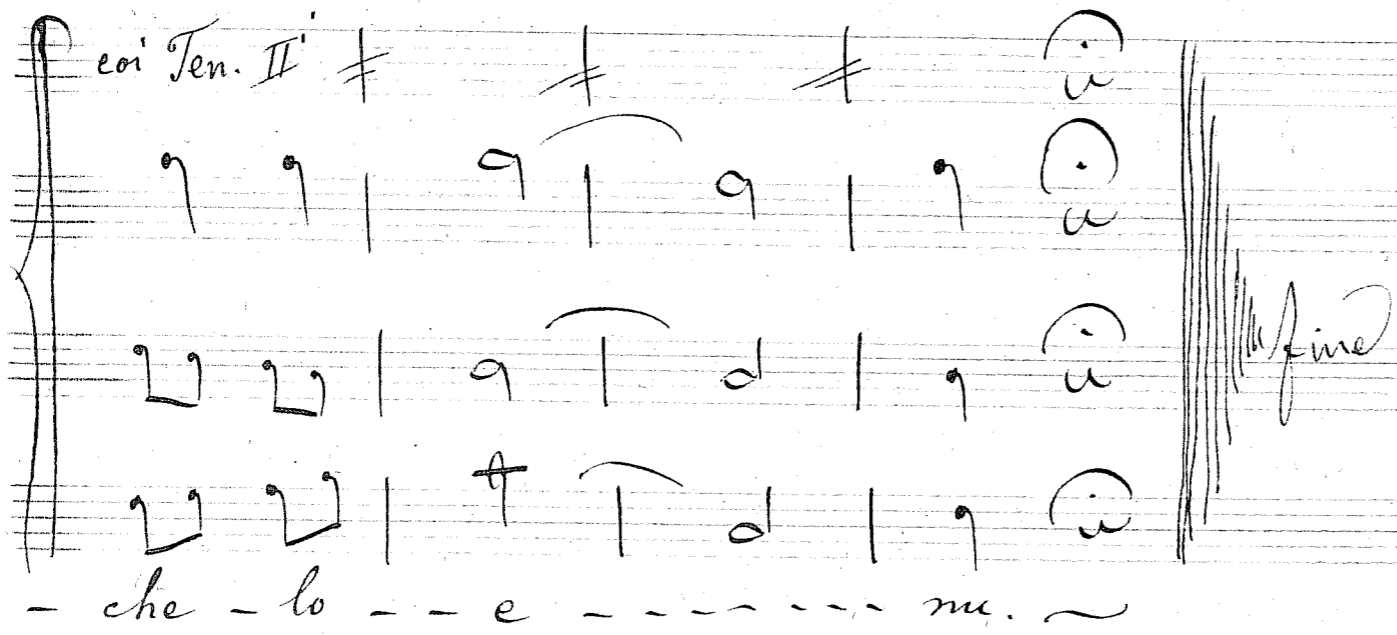
Handwritten musical score for the second system, consisting of three staves. The notation includes notes, rests, bar lines, and a double bar line at the end. Above the staves are several sharp symbols (#). The lyrics are written below the staves: "a - do - - na - i e - lo - - - - - nu -". To the right of the staves is a signature "V.L.".

Animando

En ca - dos em ca - dos ca - do - na - i chi en bil -

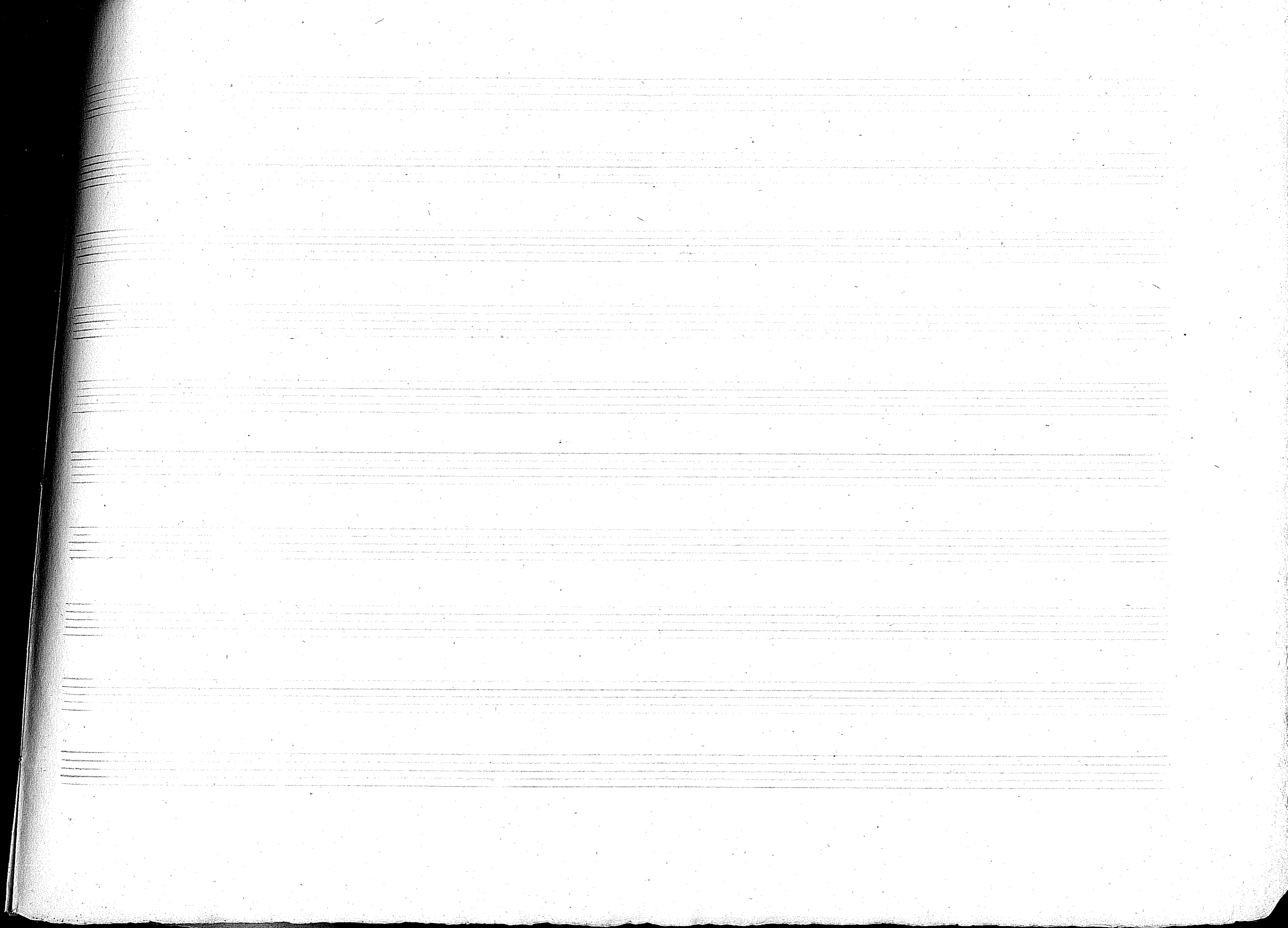
- te - ha ve - en - sur - che - lo - - e - - - - nu - - - -

Handwritten musical score on a five-line staff. The notation includes a treble clef, a key signature of one sharp (F#), and a time signature of 2/4. The music is written in a single system with four staves. The lyrics are written below the bottom staff: "che - lo - - e - - - - - nu. ~". The word "fine" is written at the end of the piece. The notation includes various note values, rests, and accidentals.



che - lo - - e - - - - - nu. ~

fine



*Handwritten signature or initials*

