

*Salmo 128°*

*Con solo, Cori, e accompagnamento d'organo,*

*All' Onorando Sig. Prof.*

*Dott. A. Basevi*

*In segno d'altissima ossequio  
offre*

*Federico Consolo*

*Piconascente*

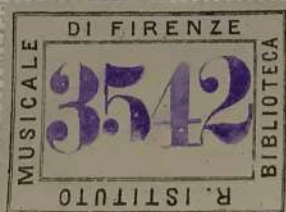


3542

DONO A. BASEVI



*Firenze il 4 Settembre 1887*



Parole del Sig. Vincenzo Min Salmo 128.

Musica di Federico Busola

*Andante*

Organo

*Poco*

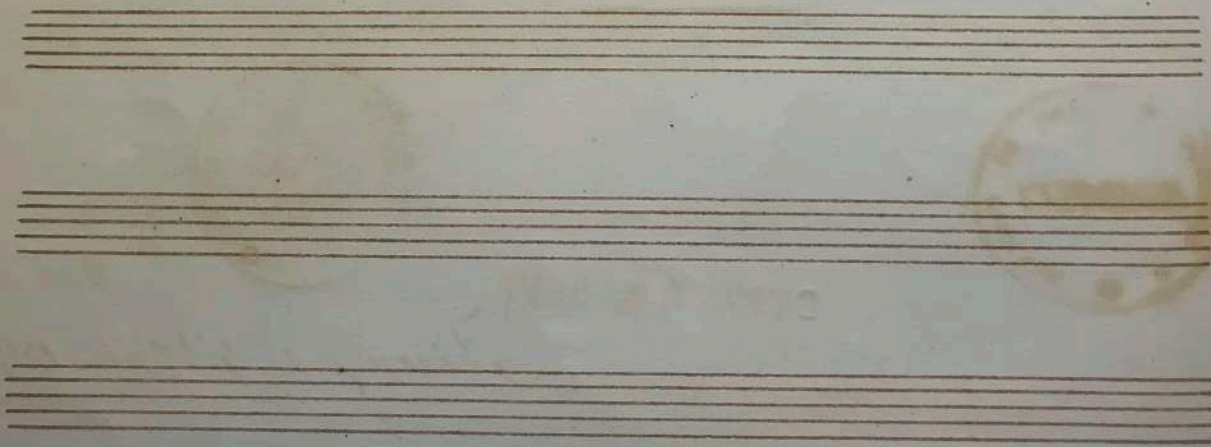
Soprani

Tenori

Basso

Ben-to o gnua che *te me il signor* il sem-tua suo calca co pie. So tu

Organo



Andola

*mf.*  
vi-vi del pro - prio su dor to bea - to è ben con te La tua

*mf.*

*Deciso.*  
Mo - glie qual vi ta fe con da l'no - tro il chiu so do mestico a sil Co - me

Yes.

*Ma-mi-dò-le-va-giò — con da Della manda i tuoi figli al Dio il.*

The first system consists of three staves. The top staff is a vocal line in treble clef with a 3/4 time signature. The lyrics are written below the notes. The middle and bottom staves are piano accompaniment in bass clef, with chords and some melodic lines.

The second system continues the piece with three staves. The vocal line and piano accompaniment are consistent with the first system. There are some fermatas and dynamic markings like 'f' (forte) present.

*Solo*

*con forza*

*Pe-co l'uom del. Li gnore te-men-te sia da lui be-ne dot-to co-si.*

The third system is marked 'Solo' and 'con forza'. It features three staves. The vocal line has a more active melody. The piano accompaniment provides harmonic support.

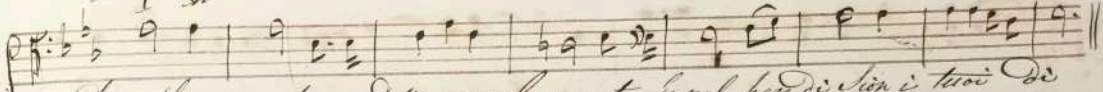
*Organo*

*legato*

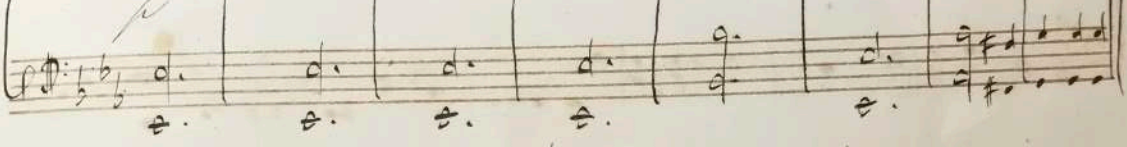
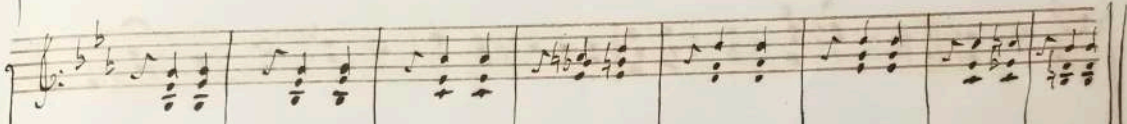
The fourth system is marked 'Organo' and 'legato'. It consists of two piano accompaniment staves. The music is more rhythmic and chordal, typical of an organ part.

Four empty musical staves are located at the bottom of the page, providing space for further notation.

*con vacillata*

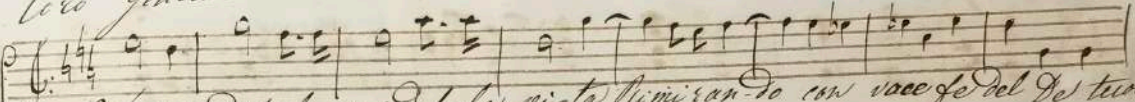


Da Si - on be ne ditto equal men - te lo nel ben de Sion i tuoi de



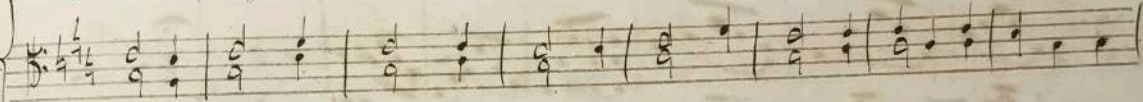
*Coro Generale*

*Soprani*

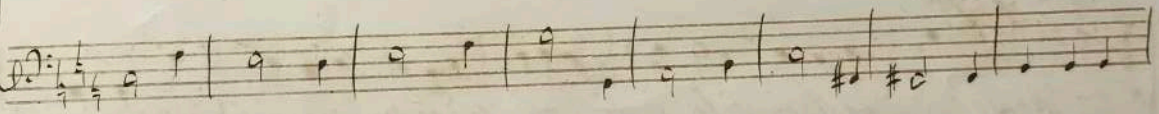


Tutti i dispo - sai del - ta vi - ta Ni - mi - ran - so con vac - ce - fe del De - i tuoi

*Tenori*

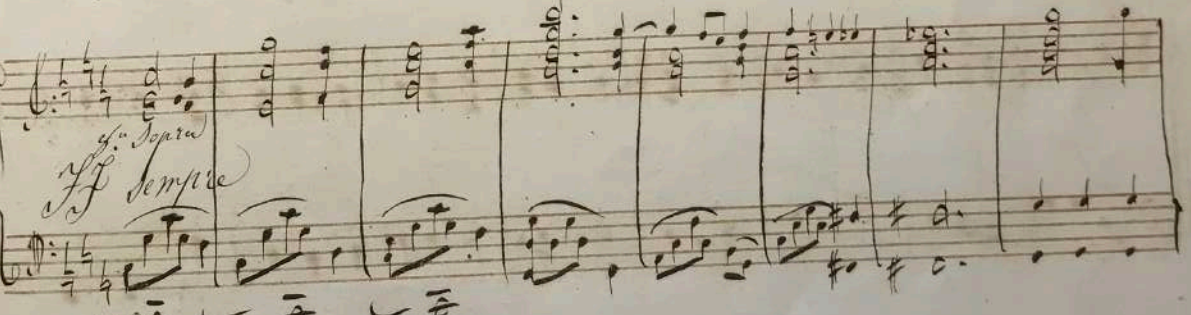


*Bassi*

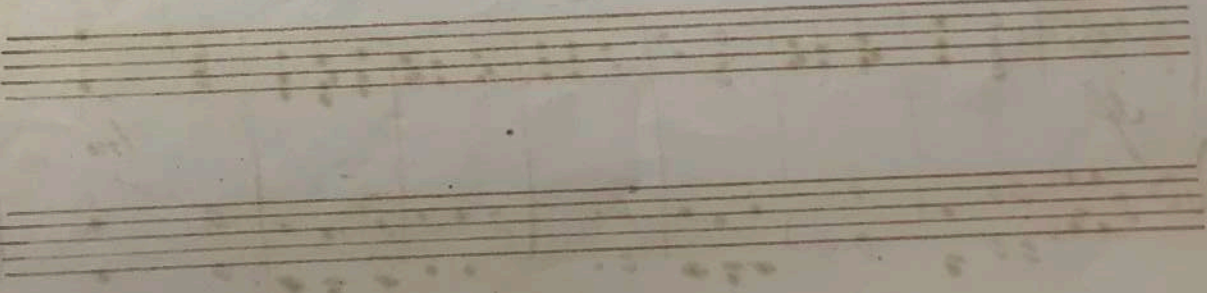


*Organo*

*ff sempre*



*Ped.*



S. *Ma-ti ne fi-gli fio-ri-ta le pro-già ne sia pace a Deus tutti i*

Handwritten musical score for the first system, featuring Soprano (S.), Alto (A.), and Bass (B.) parts. The Soprano part includes the lyrics "Ma-ti ne fi-gli fio-ri-ta le pro-già ne sia pace a Deus tutti i". The music is in 3/4 time and G major.

*f. sopra*

Piano accompaniment for the first system, consisting of right and left hand staves. The right hand is marked *f. sopra*. The music is in 3/4 time and G major.

S. *Di pasce rai della vita ni-mi rando con voca se del De tuoi*

Handwritten musical score for the second system, featuring Soprano (S.), Alto (A.), and Bass (B.) parts. The Soprano part includes the lyrics "Di pasce rai della vita ni-mi rando con voca se del De tuoi". The music is in 3/4 time and G major.

*f. sopra*

*loco*

Piano accompaniment for the second system, consisting of right and left hand staves. The right hand is marked *f. sopra* and *loco*. The music is in 3/4 time and G major.

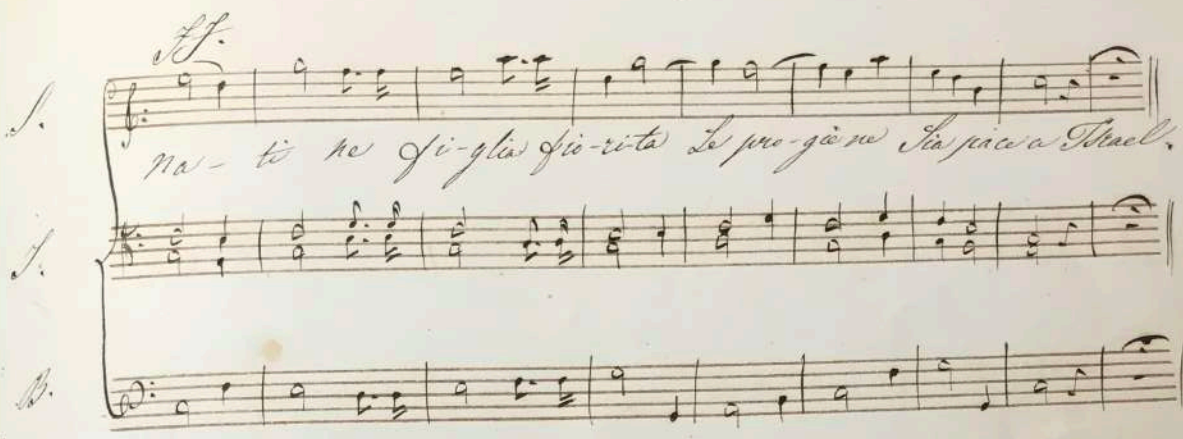
*ff.*

*S.*

na- ti- ve gi- glia gio- ri- ta Le pro- ge- re Sa- pia- a- thuel.

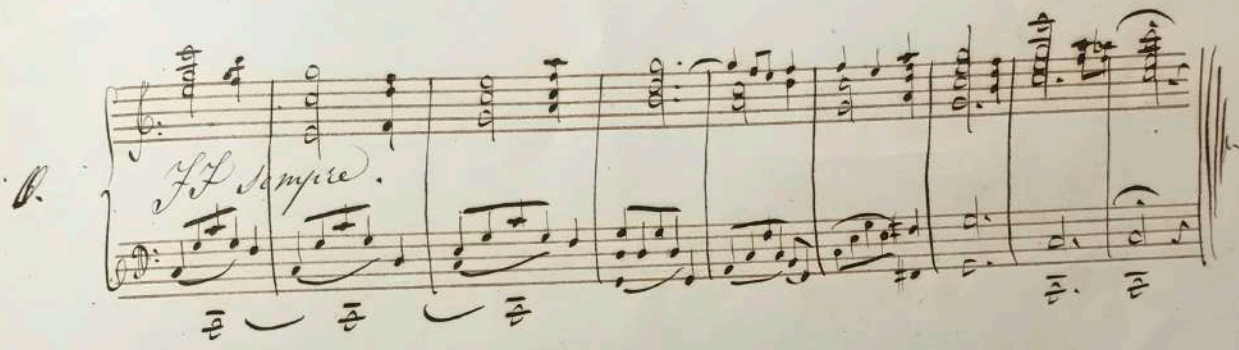
*S.*

*B.*



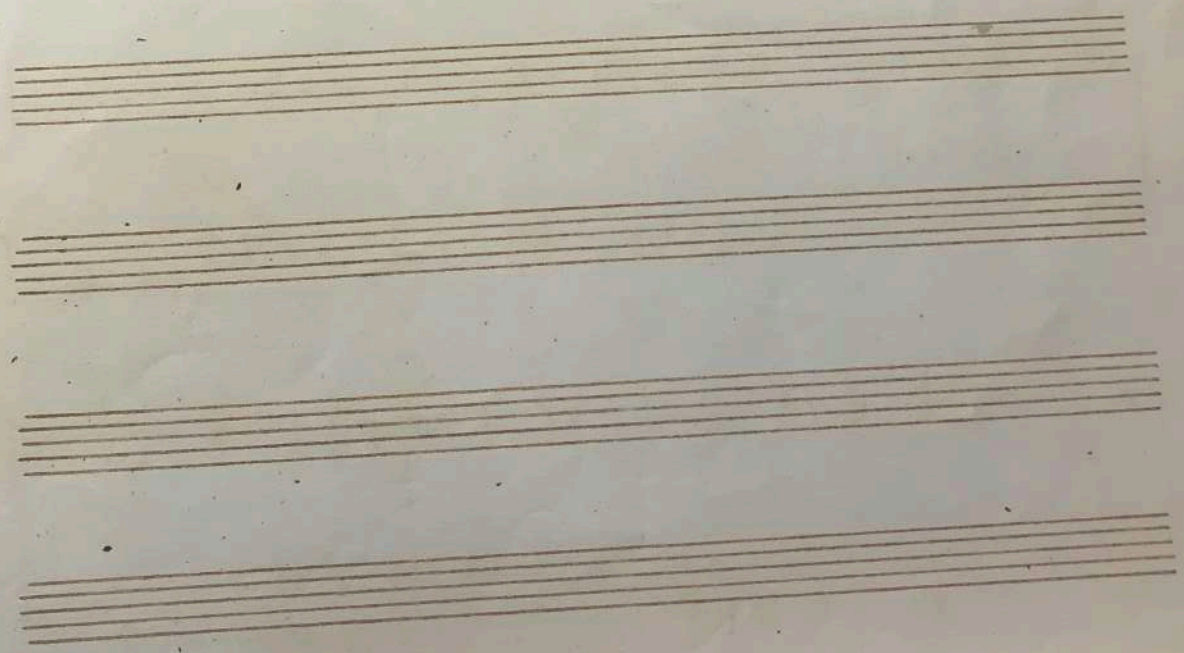
*B.*

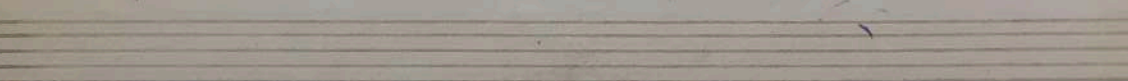
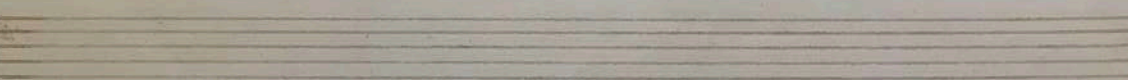
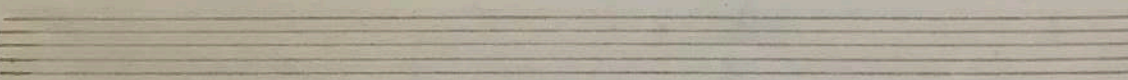
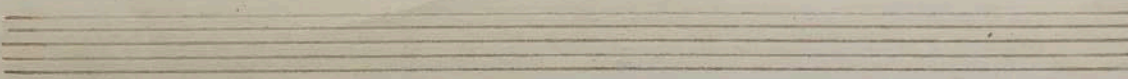
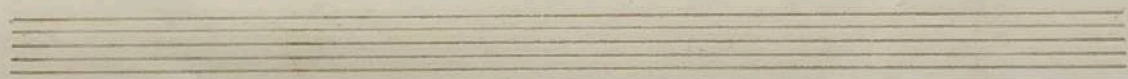
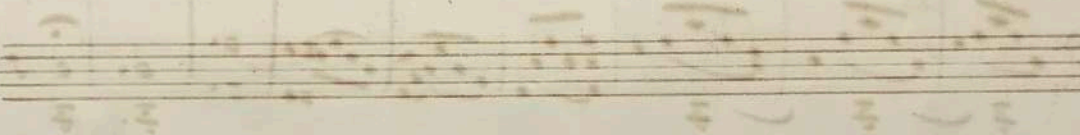
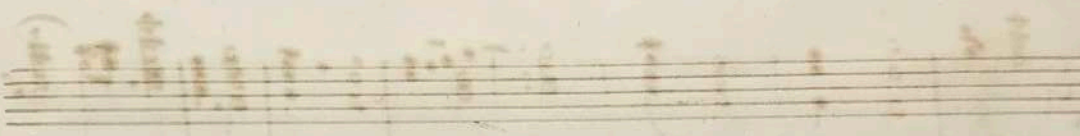
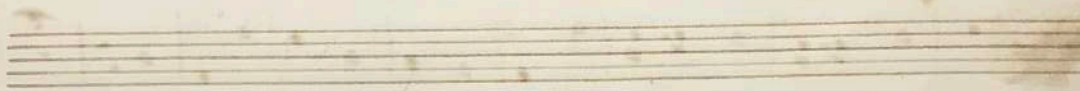
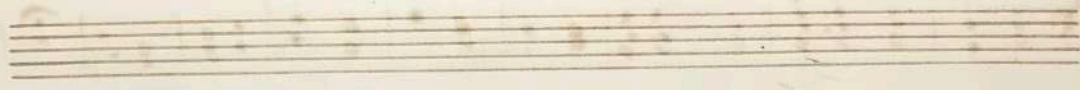
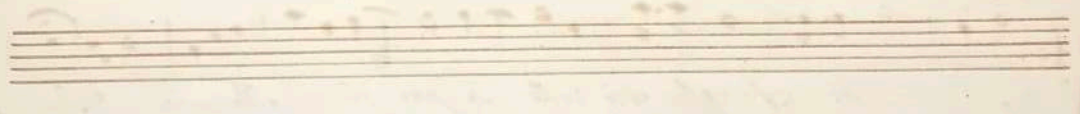
*ff. sempre.*



BIBLIOTECA DEL CONSERVATORIO  
"L. CHERUBINI" FIRENZE

3542







LE  
DI FIRENZE  
PA

