

Ad Beata

Propri



lento per solo Soprano

Voci

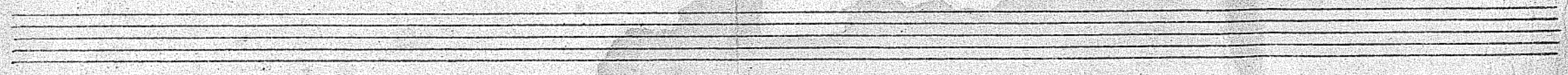
Organ

This system contains two staves. The top staff is for the voice, starting with a treble clef, a key signature of one flat (B-flat), and a common time signature. The bottom staff is for the organ, with a grand staff (treble and bass clefs). The music is written in a simple, clear hand.

This system continues the musical piece with two staves. The notation is consistent with the first system, showing the vocal line and organ accompaniment.

Coro

This system is marked 'Coro' and features two staves. The notation continues the piece, with the organ part showing some more complex chordal textures.



Handwritten musical notation on three staves. The notation includes treble clefs, a key signature of one flat (B-flat), and a common time signature (C). The first staff contains a melodic line with eighth and sixteenth notes, followed by a whole note. The second staff contains a harmonic accompaniment with chords and moving lines. The third staff contains a bass line with eighth and sixteenth notes. The piece concludes with a double bar line and repeat dots.

400

COMUNITÀ EBRAICA
di VENEZIA

7906

1517970

2308570

10 Cass
5 Tins
1 Lutes

23