

Benedetto Marcello

Salmo Pentecoste

HFM I

MVS. 11-IV



Salmo per le Pentecoste
di
Benedetto Marcello



Introduzione Lasciare sib all'Ufficiale

N. 1

Soprani
Contraltos
Organo

Allegro

Musical score for Soprans, Contraltos, and Organ. The Soprans and Contraltos parts are in treble clef with a key signature of two flats and a common time signature. The Organ part is in treble and bass clef with a common time signature. The organ part begins with a forte dynamic marking.

Vocal and Organ accompaniment with Latin lyrics. The vocal line is in treble clef with a key signature of two flats and a common time signature. The organ accompaniment is in treble and bass clef with a common time signature. The lyrics are: f. Ia cum ia cum e lo im e lo ia cum iacum e lo.

im ve-ia fu-ru ve-ia ia fu-ru o-ia

im

This system contains a vocal line and a piano accompaniment. The vocal line is written on a single staff with lyrics in Italian. The piano accompaniment is written on two staves. The music is in a common time signature and features a mix of eighth and sixteenth notes, with some rests and phrasing slurs.

va-ia ve-ia nu-su me

ve-ia nu-su me

This system continues the musical piece. The vocal line has two lines of lyrics. The piano accompaniment continues with similar rhythmic patterns and chordal structures. The handwriting is consistent with the first system.

No. 2
Largo maestoso per Solo contr.

da - nau mi - pa - nau
sa - nau mi - pa - nau.

san - ten do - che - i - mes do - nez mi - pa - nau.

Handwritten musical score for the first system. The system consists of two staves. The upper staff is a vocal line with lyrics written below it. The lower staff is a piano accompaniment. The lyrics are: *ne es che - i - mes do - rag mi pe ne es*. The music is written in a single system with a brace on the left side.

Handwritten musical score for the second system. The system consists of two staves. The upper staff is a vocal line with lyrics written below it. The lower staff is a piano accompaniment. The lyrics are: *io ve - du re - da gnim mi pe - ne e - lo - im*. The music is written in a single system with a brace on the left side.

And. 3 *Sostenuto*

Handwritten musical score for the first system. It consists of two staves: a piano (treble clef) and a bass (bass clef). Both staves are in treble clef and common time (C). The key signature has one sharp (F#). The tempo is marked *And. 3* and the mood is *Sostenuto*. The piano part begins with a piano (*p.*) dynamic marking. The music features a mix of quarter and eighth notes, with some chords and rests.

Handwritten musical score for the second system. It includes a vocal line and piano accompaniment. The vocal line has lyrics: *p. ve - sa - di - chum* and *is - me*. The piano accompaniment is in treble clef and common time. The music includes a piano (*p.*) dynamic marking and features various rhythmic patterns and rests.

Handwritten musical score for the first system. It consists of two staves: a vocal line and a piano accompaniment line. The vocal line begins with the lyrics "hu ia gnal su lif - me e lo". The piano accompaniment provides harmonic support with chords and moving lines. The dynamic marking *mf.* is present at the beginning of the vocal line.

Handwritten musical score for the second system. It also consists of two staves: a vocal line and a piano accompaniment line. The vocal line continues with the lyrics "ia - gnal su lif - me me e lo". Above the vocal line, the word "Solo" is written, and the tempo marking "allarg." is present. The piano accompaniment continues with chords and moving lines. The dynamic marking *pp* is written at the bottom right of the system.

a tempo f. Quella

im ve ia si see be sem

This system contains a vocal line and two piano accompaniment staves. The vocal line is written in a single staff with lyrics underneath. The piano accompaniment consists of two staves with various rhythmic patterns and dynamics. The tempo is marked 'a tempo' and the dynamic is 'f.'.

mf. dim. rall. p. pp.

ha ve ia si see be sem

This system continues the musical piece. The vocal line has lyrics 'ha ve ia si see be sem'. The piano accompaniment continues with similar rhythmic patterns. Dynamics include 'mf.', 'dim.', 'rall.', and 'pp.'.

Oratore recita diversi versetti, indi il
canta i seguenti:

Solo

p. te

p.

ha

L' Oratore recita diversi versetti, indi il
Coro canta i seguenti:

Soprano

Contralto

Organo

Andantino

Solo

p. te

Handwritten musical score for the first system. The vocal line (top staff) begins with a piano (*p.*) dynamic and contains the lyrics "me gnor le lo im Solo". The piano accompaniment (bottom staff) starts with a *pp.* dynamic. The system concludes with a *p.* dynamic marking above the vocal line.

Handwritten musical score for the second system. The vocal line (top staff) continues with the lyrics "me gnor le lo im qual". The piano accompaniment (bottom staff) features a *mf.* dynamic marking. The system concludes with a *mf.* dynamic marking above the vocal line.

Handwritten musical score for the first system. It consists of four staves: two vocal staves and two piano accompaniment staves. The vocal lines are written in a cursive hand with lyrics underneath. The piano accompaniment is written in a similar hand. The lyrics for the first system are: "ra - el gnael is - ra - el ga a wa - do ve - gnu". There are dynamic markings "cresc." above the first vocal staff and below the second piano staff. A "m. d." marking is present at the end of the second piano staff.

Handwritten musical score for the second system. It consists of four staves: two vocal staves and two piano accompaniment staves. The tempo marking "Ad libitum molto" is written above the first vocal staff. The lyrics for the second system are: "to ba - se ha - chem". There are dynamic markings "dim." above the first vocal staff, below the second vocal staff, and below the first piano staff. A "p." marking is present above the second vocal staff and below the second piano staff. The system concludes with a double bar line and a fermata.

Andante

Handwritten musical score for the first system. It consists of four staves: two vocal staves (Soprano and Alto) and two piano staves (Right and Left Hand). The key signature has one flat (B-flat), and the time signature is common time (C). The lyrics are: "no - ra e lo - mi mi micda se ha mi". Performance markings include *mf.* (mezzo-forte), *dim.* (diminuendo), and a note "(senza precipitare la frase)".

Handwritten musical score for the second system. It consists of four staves: two vocal staves and two piano staves. The lyrics are: "micda se ha el is - ra - el u no". Performance markings include *p. cresc.* (piano crescendo) and *a poco a poco cresc.* (crescendo poco a poco).

Handwritten musical score for the first system. It consists of four staves. The top staff is a vocal line with the lyrics "gra-tia - su - mod la - gram" written below it. The second and third staves contain piano accompaniment, and the fourth staff has a few scattered notes. The notation is in a single system with a vertical bar line.

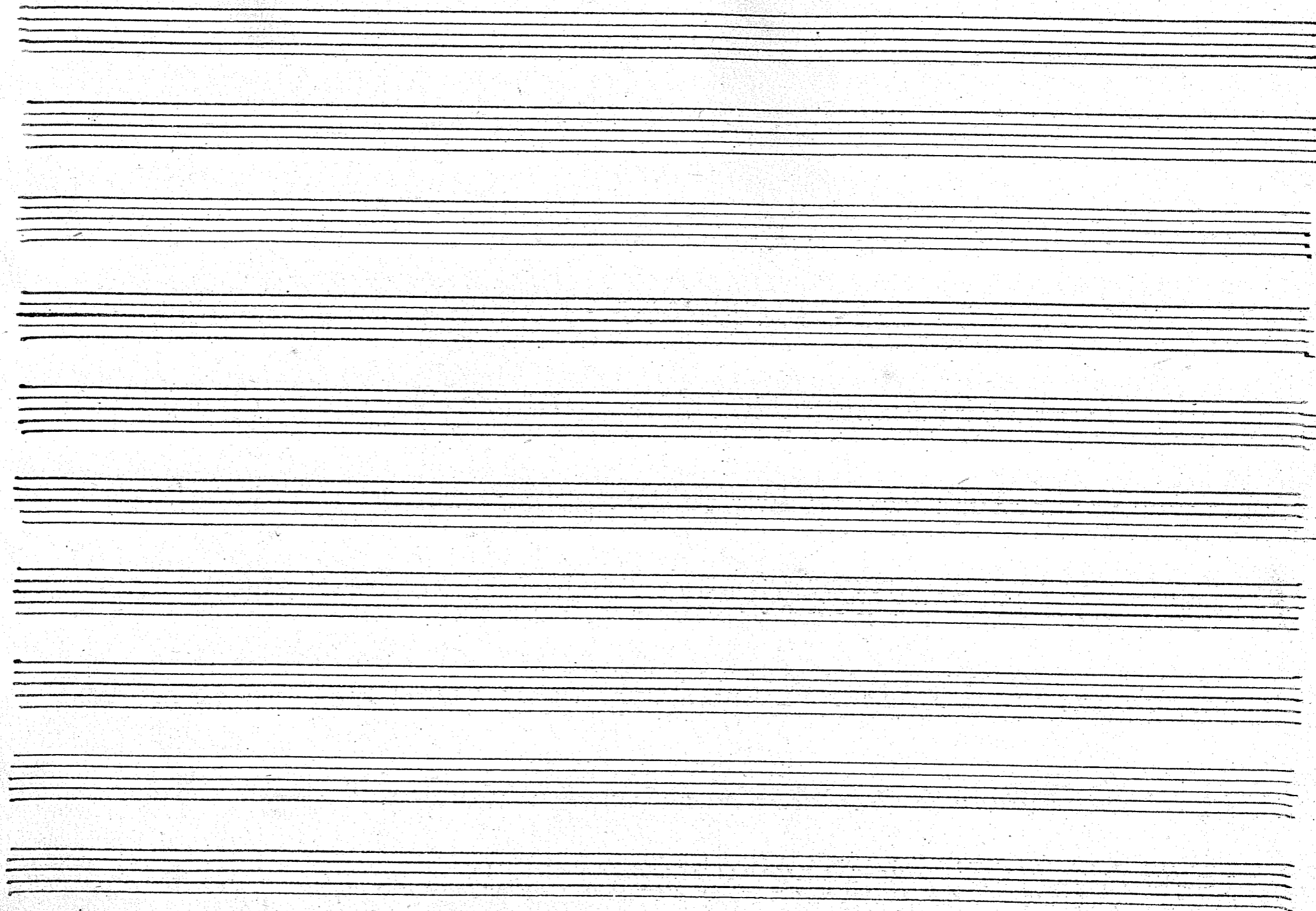
Handwritten musical score for the second system. It consists of four staves. The first staff begins with the tempo marking "rallent." and contains the lyrics "lo - em". The second and third staves contain piano accompaniment. The fourth staff has some notes and a vertical bar line. The notation is in a single system with a vertical bar line.

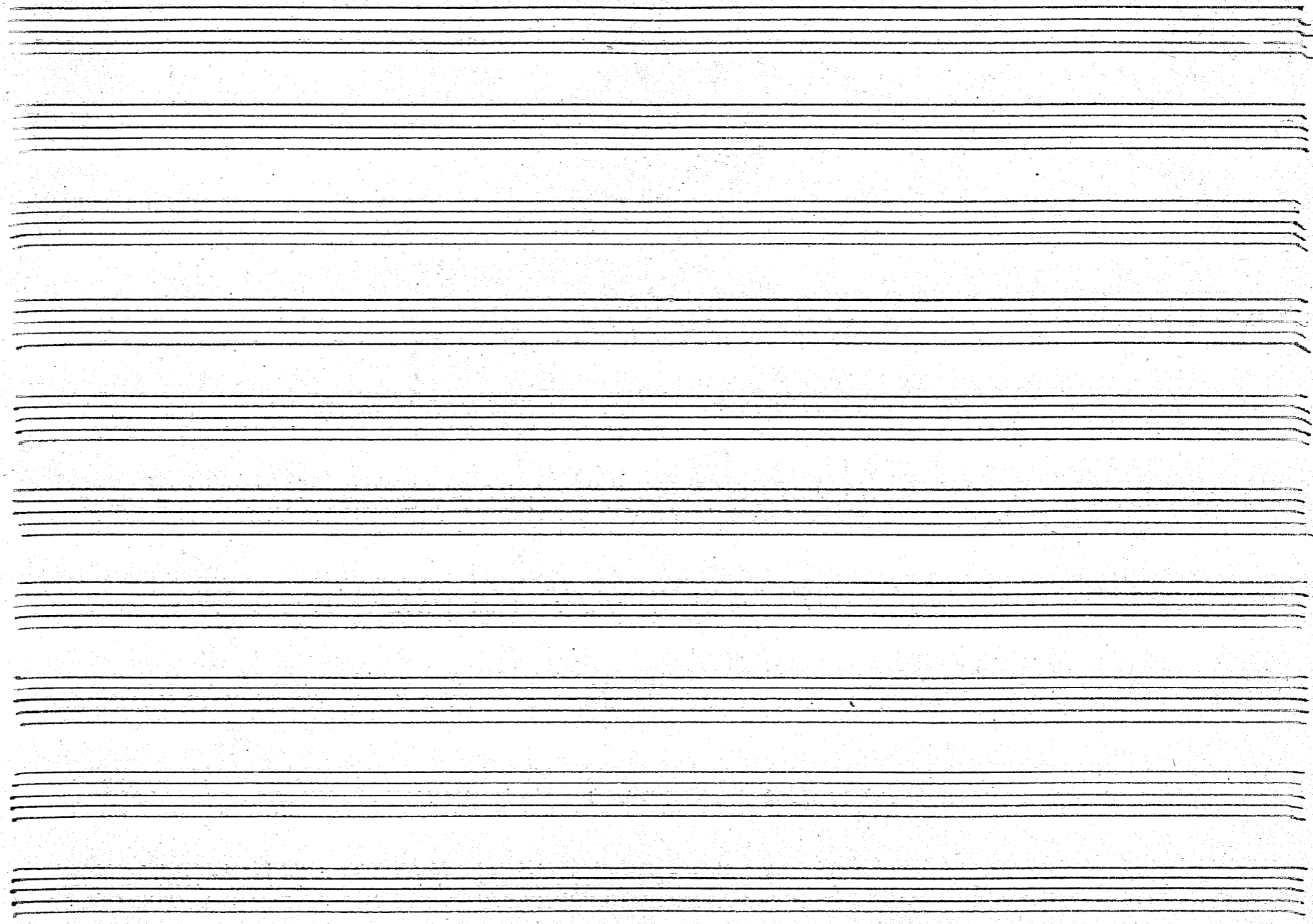
den. gnet ve da gra - su - mod la - gram

ba - ruh e lo - em

dim. rallent. p.

re dim. rall.







$\frac{1}{2}$

ND

