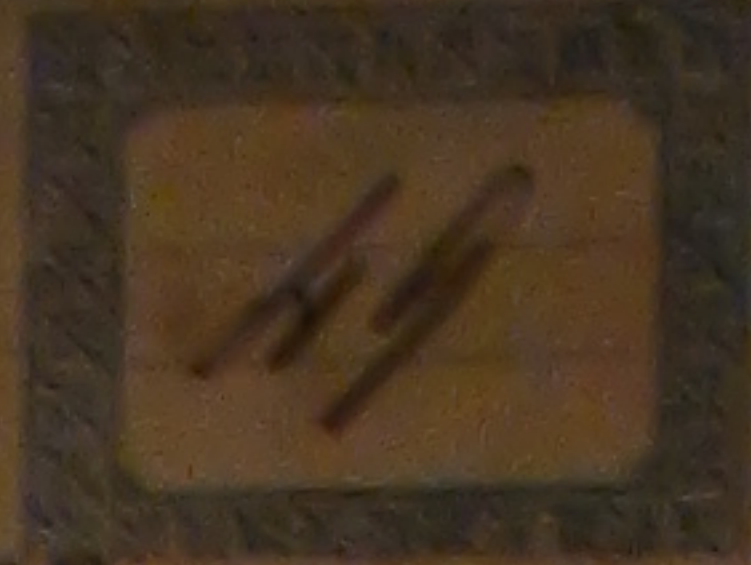


Nov. 11. 1710

97  
—  
Firenze



**Alta Oreda**

per Coro di Donne

con accompagnamento

d'Organo

del

M<sup>re</sup> Gazzia





*And<sup>te</sup> Sost.<sup>to</sup>*

Soprano *f* a . . . . . tã o . re . . da la - da . . quad *pp*

Contralti *Unisono* a . . . . . tã o . re . . da la - da quad *pp*

Organo *f And<sup>te</sup> Sost.<sup>to</sup>*

chi a . do nai u a - e . . . lo - im en . . . . .

chi a do nai u a - e . . . lo . . im en . . . . .



*rall* *atempo* *rall* *f* *pp*  
 quod mi - le - - va - - do en ca - mo - - - ha ba - le - o -  
*rall* *atempo* *rall* *f* *pp*  
 quod mi - - le - - - va - - do en ca mo - - - ha ba le - o -  
 (Piano accompaniment with *f* and *pp* markings)

*f*  
 im a do - na - i ve - - en che magna se - - - - ha  
*f*  
 im a do na - i ve - - en che magna se - - - - ha  
 (Piano accompaniment with *f* and *dim* markings)

Segno: Jei adanai

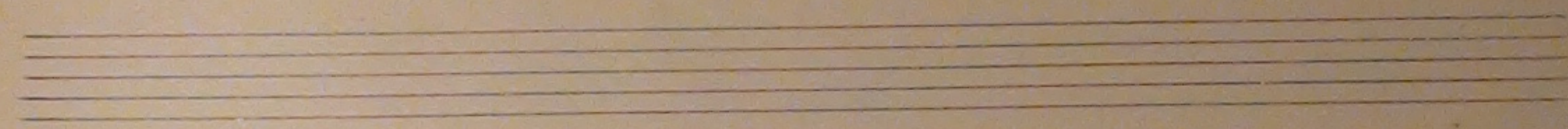


Handwritten musical score for the first system. It consists of two vocal staves and a piano accompaniment. The key signature has two flats (B-flat and E-flat), and the time signature is 4/4. The first vocal staff begins with a forte (*f*) dynamic, followed by a piano (*p*) dynamic. The lyrics are "Je i a-do-na i". The piano accompaniment also starts with a forte (*f*) dynamic and includes a piano (*p*) dynamic section.

Handwritten musical score for the second system. It consists of two vocal staves and a piano accompaniment. The key signature has two flats (B-flat and E-flat), and the time signature is 4/4. The first vocal staff begins with a pianissimo (*pp*) dynamic. The lyrics are "e-lo-e-nu qui-ma--nu ca-a-ser a-ia quim". The piano accompaniment also starts with a pianissimo (*pp*) dynamic and includes a piano (*p*) dynamic section. The word "Rall" is written above the piano part. There are triplets in the vocal lines.



Handwritten musical score for the first system. It consists of two vocal staves and a piano accompaniment. The lyrics are: a - - - vo - - - de - - nu al - ja gnaz - ve - - nu. The piano part features a simple harmonic accompaniment with a bass line and a treble line.



Handwritten musical score for the second system. It consists of two vocal staves and a piano accompaniment. The lyrics are: al - - - ja gnaz - ve - - nu ve - al - - i - te sce - - - - nu. The piano part continues with a simple harmonic accompaniment.

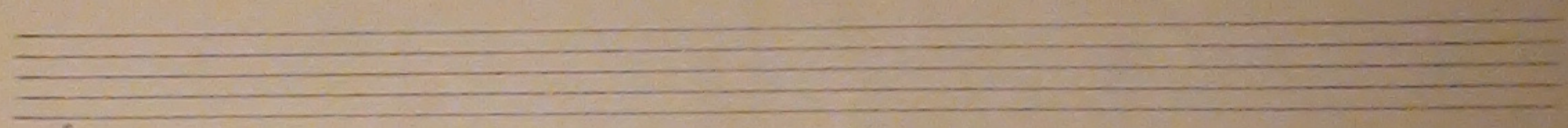
Segue: Baruh amacom



*f*

Da... ruh a ma.com be. na don to. ra —

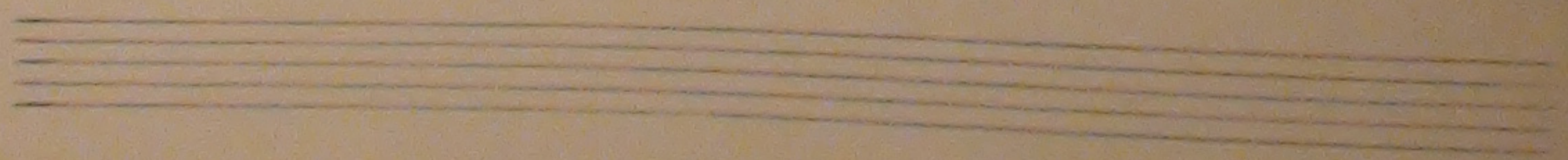
Da... ruh a - ma.com be na don to. ra —



*d*

le... qua... moira. el ba... ruh... u

le... qua... moira. el ba... ruh... u





*pp*

ab - - - re a - quam se - ca - - - ha lo -

*pp*

ab - - - re a - quam se - ca - - - ha lo -

*pp*

*p.*

*mf*

*rall*

ab - - - re a - quam - se ado na. i e lo - a - - - u.

*mf*

ab - - - re a - quam - se ado na. i e lo - a - - - u

*mf*

*p.*

*rall*

*mf*



