

הלל - הלל M. Nunes Franco.

Solo.

A - le - lu èt a - do - rai còl go - im,

scia - be - tu - u cò - l au - rum.

choro

<p>Ghi - ga - bar ña - le - nu has - dò</p>	<p>Ghi ga - bar ña - le - nu has - dò</p>	<p>Ghi - ga - bar ña - le - nu has - dò ve - e -</p>	<p>Ghi ga - bar ña - le - nu has - dò ve - e -</p>	<p>Ghi - ga - bar ña - le - nu has - dò ve - e -</p>
---	---	--	--	--



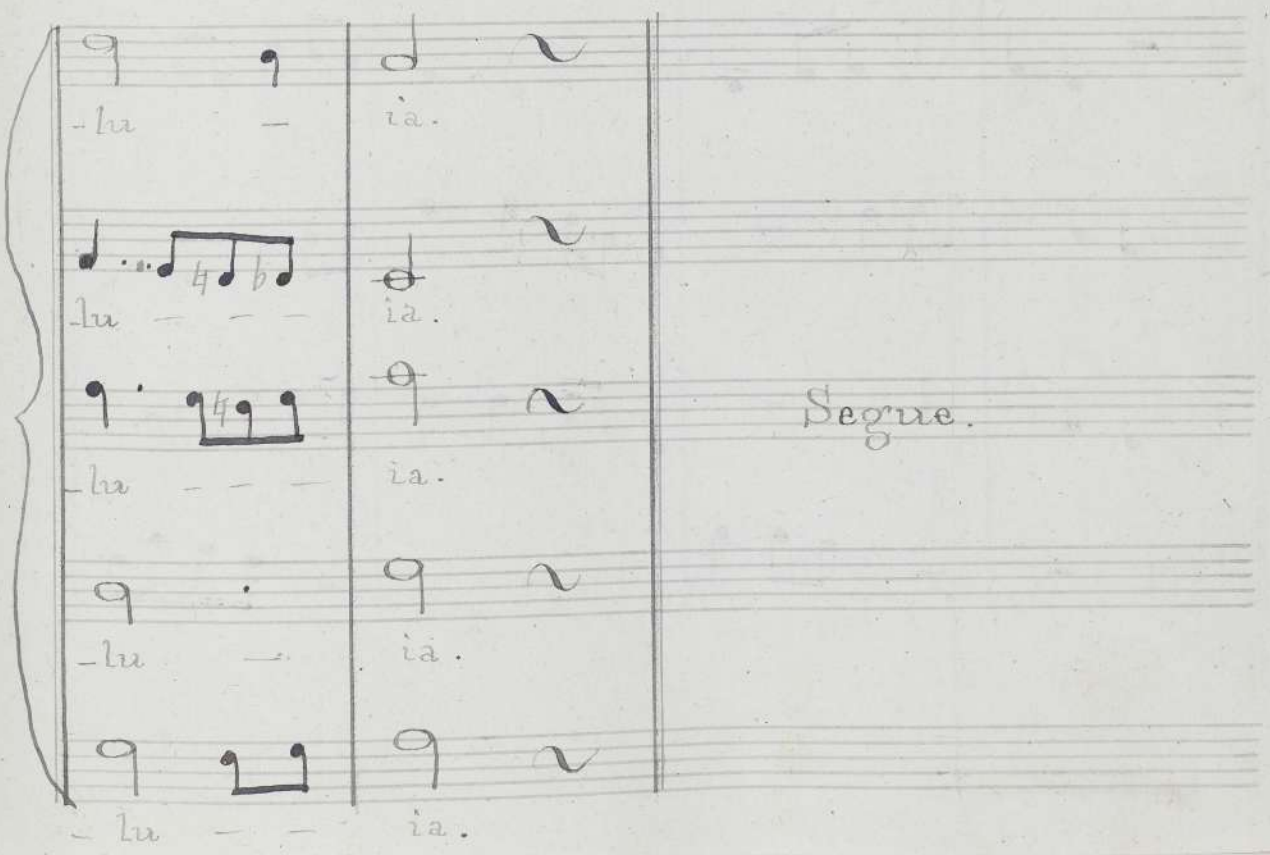
ve-e-met a-do-nai le-ño-la-m a-le

ve-e-met a-do-nai le-ño-lam a-le

me-t a-do-nai le-ño-lam a-le

met a-do-nai le-ño-lam a-le

met a-do-nai le-ño-la-m a-le



-lu - ia.

-lu - ia.

-lu - ia.

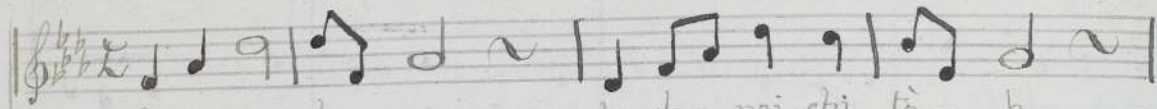
-lu - ia.

-lu - ia.

Segue.

Andante

Solo.



O - - du - - la - do - nai chi to - b,



chi - - le - - rio - la - - ha - s - do.

Coro.



O - du - - - la - do - nai chi to - b,



O - du - - - la - do - nai chi to - b,



O - - du - - la - do - nai chi to - b,



O - - du - - la - do - nai chi to - b,



O - du - - - chi - - -

chi - le - ño - la - m has - do.
chi - le - ño - la - m has - do.
chi - - le - - ño - la - m has - do.
chi - - le - ño - la - m has - do.
tòb, chi - le - ño - la - m has - do.

D. G. altre 3 volte, poi segue :

Andante

Mi - n a - me - zar ca - - ra - ti
Mi - n a - me - za - r ca - - ra - ti
Min a - me - zar ca - - ra - ti

ia - - - ña - - - - - ria - ni ba - mer - ha - - b

ia - - - ña - - - - - ria - ni ba - mer - ha - - b

ia - - - ña - - - - - ria - ni ba - mer - ha - - b

ia - - -

ia - - -

ia - - -

D. d. due volte l'ardante con
altre parole.

Soprani 1^o
Tò - b la - ha - sò - - - t ba - - - do - na - - - i

Soprani 2^o
Tò b la - ha - sò t ba - - - do - na - i

Tenori
Tò - b la - ha - sò - - - t ba - - - do - na - - - i

Bassi
Tò b la - ha - - - sò - - - - t ba - do - - - na - - - - i

Handwritten musical score for four voices. The lyrics are: mi - be - to - ah ba - a - dam. The notation includes various note values, rests, and a fermata at the end of each line.

Soprani
To - b la - ha - so - - t ba - - do - na - - i

Tenori
To - b la - ha - so - - t ba - - do - na - - i

Handwritten musical score for Soprano and Tenor voices. The lyrics are: To - b la - ha - so - - t ba - - do - na - - i. The notation includes various note values, rests, and a fermata at the end of each line.

1^a

Handwritten musical score for three voices. The lyrics are: mi - be - to - ah bi - ri - di - bi - m. The notation includes various note values, rests, and a fermata at the end of each line.

chi a mi lam. Sa bu ni
chi a mi lam. Sa bu ni
chi a mi lam. Sa bu ni

gam se ba bu ni be sce ni a do na
ga -- m se ba -- bu ni be sce ni a do na
se ba bu ni be sce ni a do na

chi a mi lam. D. C. tutto.
chi a mi lam. dall' andante.
chi a mi lam.

Larghetto. Terzetto di Soprani.

Lò a-mu-t chi e-h-ia

Lò a-mu-t chi e-h-ia

Lò a-mu-t chi e-h-ia

va-a-sa-pè-r ma-ña-se-ia,

vaa-sa-pè-r ma-ña-se-ia,

vaa-sa-pèr ma-ña-se-ia,

ia-sòr i-se-ra-ni-ia

ia-sòr i-se-ra-ni-ia

ia-sòr i-se-ra-ni-ia

ve - la - ma - vet lo' no - ta - na - - - ni.

ve - la - ma - vet lo' no - ta - na - - - ni.

ve - la - ma - vet lo' no - ta - na - - - ni.

D.C. fino al segno

f poi segue:

za - di - chi - ia

za - di - chi - ia

za - di - chi - ia

- bo' - u - bo'.

- bo' - u - bo'.

- bo' - u - bo'.

Allegro.

Soprano

O - de -

rit.

Violini

O - de - ha - chi - ña - ni - ta - ni

Bassi

rit.

1^a

va - te - i - li -

va - te - i - li -

va - te - i - li -

rit. *rit.*

li - scia - ña

2^a

va - te - i - li - li - scia - ña .

va - te - i - li

va - te - i - li

rit. *rit.*

ña .

E - beri maa - su a - bo - nita

E - be-n maa - su a - bo - nita

E - be-n maa - su a - bo - nita

a - ie - ta le - rose pi - na.

a - ie - ta - le - ro - se pi - na

a - ie - ta le - rose pi - na .

a - ie - ta le - rose pi - na.

a - ie - ta - le - *miss* *miss*

a - ie - ta - le - *miss* *miss*

אנא

Solo.

1^o Soprano
2^o Soprano
3^o Soprano

A - - na a - do - nai
A - na a - do - nai
A - na a - do - nai
A - na a - do - nai

Solo.

1^o S.
2^o S.
3^o S.

sci - - - ña - - - na ...
sci - - - ña - - - na
sci - - - ña - - - na ...
sci - - - ña - - - na

Andante

Sop. 1^a
A - - - na - a - do -

Sop. 2^a
A - - - na a - do -

Tenor
A - - - na - - - a - do -

Bassi
A - - - - na - - - - a - - - do -

na - i
o - - - - - sci - - - - - ña - - - -

na - i
o - - - - - sci - - - - - ña - - - -

na - i
o - - - - - sci - - - - - ña - - - -

na - i
o - - - - - sci - - - - - ña - - - -

na
na
na
na

Q. S.

quinto

ברוך הבא

All.

Soprano
Ba-ruh a - ba be- scè-m a-do- na - i

Alto
Ba-ruh a - ba be- scè-m a-do- na - i

Bassi
Ba-ruh a - ba be- scè-m a-do- na - i

be- rah-ru- hèm mi- bèt a-do- nai,

be- rah-ru- hèm mi- bèt a-do- nai,

be- rah-ru- hèm mi- bèt a-do- nai,

e - li a - ta - - ve - o - de - ca,

e - li a - ta - - ve - o - de - ca,

ve - o - de - ca,

e - lo - a - i a - ro - me - me - ca.

e - lo - a - i a - ro - me - me - ca.

a - ro - me - me - ca.

du - - du - - du

Handwritten musical score for the first system. It consists of three staves. The top staff has a treble clef and a key signature of one flat (B-flat). The lyrics are: "la - - donai chi to' - b,". The middle staff has a bass clef and a key signature of one flat. The bottom staff has a bass clef and a key signature of one flat. The music is written in a simple, handwritten style with some corrections and a wavy line at the end of the bottom staff.

Handwritten musical score for the second system. It consists of three staves. The top staff has a treble clef and a key signature of one flat. The lyrics are: "chi - - - - le- ño - larra has -". The middle staff has a bass clef and a key signature of one flat. The bottom staff has a bass clef and a key signature of one flat. The music is written in a simple, handwritten style with some corrections and a wavy line at the end of the bottom staff.

Handwritten musical score for the third system. It consists of three staves. The top staff has a treble clef and a key signature of one flat. The lyrics are: "do' - - - - do' - - - - do'". The middle staff has a bass clef and a key signature of one flat. The bottom staff has a bass clef and a key signature of one flat. The music is written in a simple, handwritten style with some corrections and a wavy line at the end of the bottom staff.