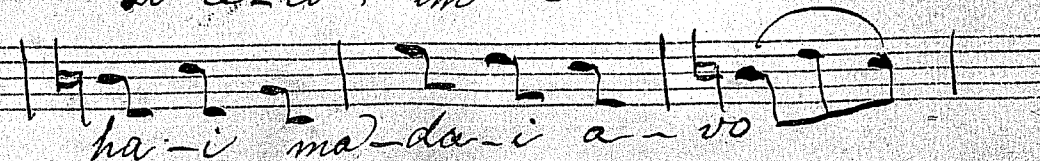
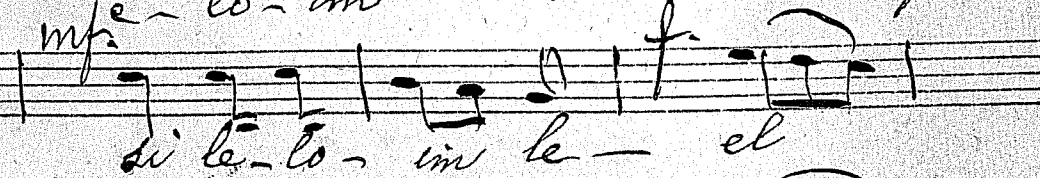
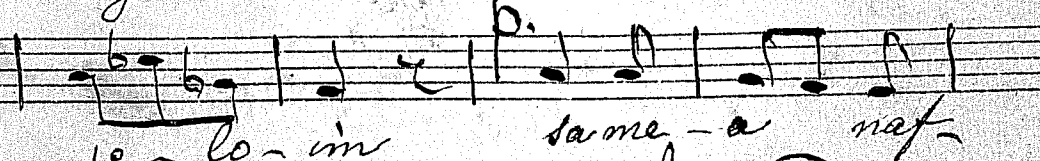
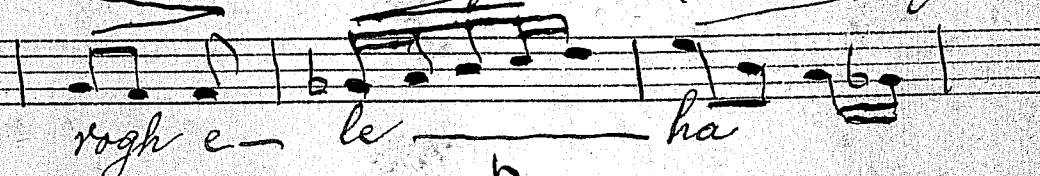
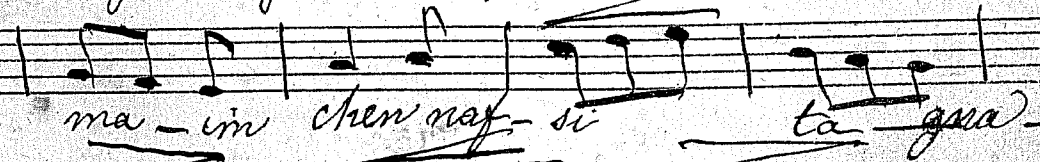
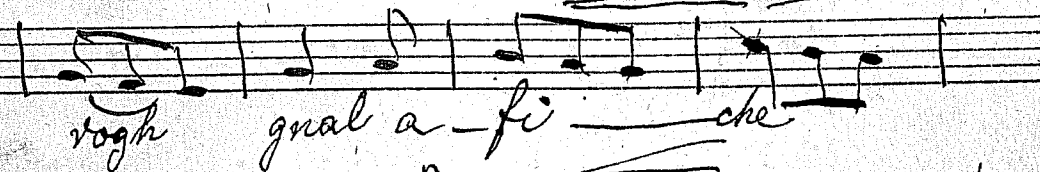
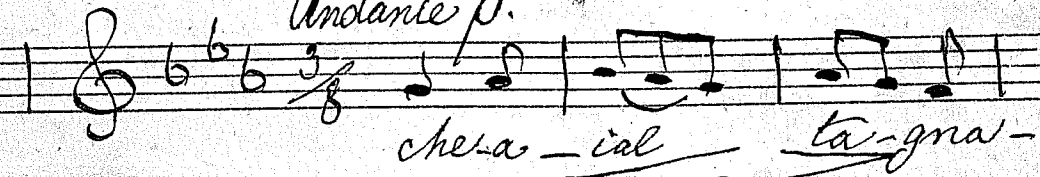


Marcello
Salmo di Susco
parte per Soprano

di Lucio da salmi di Marcello

Bisogna aspettare l'intonazione
dell'ufficiante

Andante p.



ve - e - ta - e pe - ne e - lo - imo

p.
a - i - da li *Dim.* gna - di
cresc.

le - hem i - mam va - la - i la

p.
be - e - mor e - la - i col a - i - om

mf.
a - i - e - lo - e ha

Dim.
e - lo - e - che - ra - ve -

mf.
es - pe - ha - gna - la - i - nat -

Dim.
si - chi - e - que - rot - ba - sah

Dim.
e - da - dem - gna - be - e - lo - im

p. *cresc.*
be - col - ri - na ve - do -

p.
ra a - mon ho - ghe - gh

mf.
L'Ufficiale recita

mf.
To -

p.
mam ie - sa - ve

cresc.
a - do - na - i has - do - do u - va -

lai - la si - ro qui - mi ter - fi -

mf.
la - le - el ha - ia - i

cresc.
o - me - ra - le - el *sal*

qui - la - ma - se - hat - ta - ri

Handwritten musical score on the left page of an open notebook. The music is written on ten staves. The lyrics are in a non-Latin script, likely Georgian. The score includes dynamic markings such as *p.*, *mf.*, and *f.*, and a tempo marking *Allegro molto*. The lyrics are: la ma co - der e - hi naf - si u - ma te - e - leh be - la has o - tier mi gna - la i u - ma be - re sah be - gnas mo - da - i he - re fu - ni so - re - ra i be om ram li le - lo - im chi be om ram e - la i col a - iom a - ie e - lo - e ha? Ma - tis - to - ha -

Handwritten musical score on the right page of an open notebook. The music is written on ten staves. The lyrics are in a non-Latin script, likely Georgian. The score includes dynamic markings such as *p.*, *f.*, and *dim.*. The lyrics are: hi naf - si u - ma te - e - mi gna - la i u - ma te - e - mi gna - la o - hi - li le - lo - im chi gnod o - de - ne o - de - nu o - de - nu ce - su - gnod pa - na - i

ff.
ie - su -
gnod pa - na - i
ve - lo - a - i ve - lo - a -
i ve - lo - a - i ve - lo - a -
rall.
i

The image shows ten horizontal musical staves, each consisting of five parallel lines. They are arranged vertically down the page and are currently blank.

4-i

COMUNITA EBRAICA
di VENEZIA

